

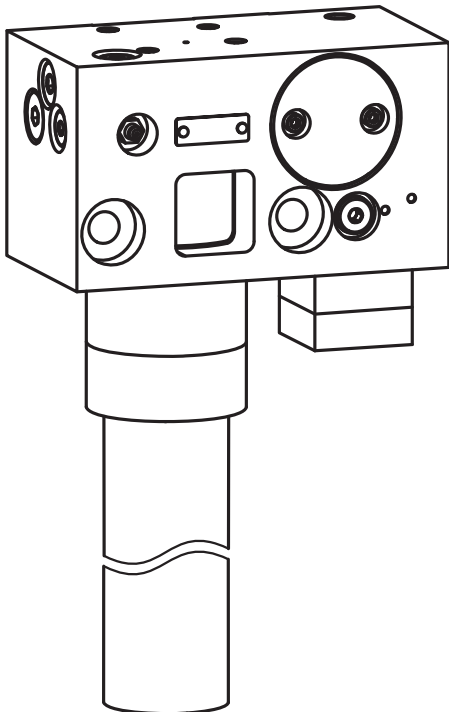
Hydraulic Pump **BEKAHAMAX2** SYSTEM

General description

The hydraulically actuated grease pump BEKA HAMAX System 2 is mainly used to lubricate hydraulic hammers or other construction machinery accessories.

Due to its compact design, it can be mounted directly at the accessory unit.

BEKAHAMAX System 2



For supply, the grease pump is connected with a bypass line to the supply and return lines of the hydraulic system of its carrier. This can be done at choice via the hose lines or via direct flange connection.

As the drive is effected via a hydraulic motor, continuous supply of lubricant is ensured. The delivery rate can be varied with a throttle on the hydraulic motor. In case of minor lubricant requirements, a pumping element with adjustable delivery rate is optionally available.

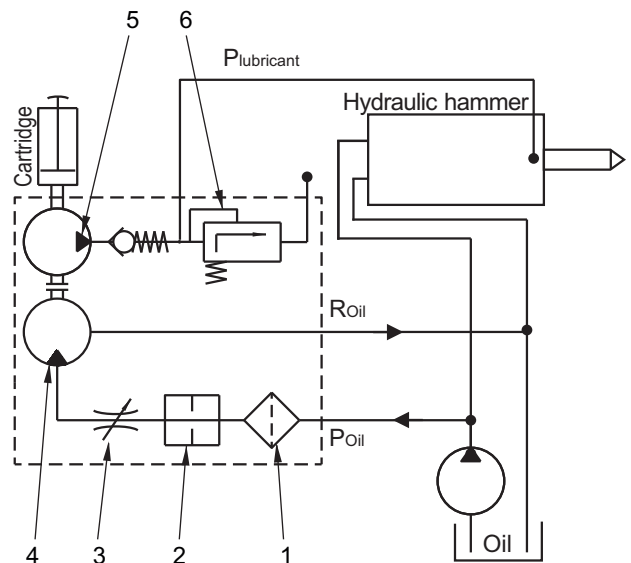
PE 120FH
PE 120FVH

Ref.No.: 2576GE0001
Ref. No.: 2576GE0002

The connection of the lubricant line to the pump housing is possible in 4 positions. To protect the lubricant system, the pump comprises a pressure limiting valve which opens as soon as 280 bar have been reached. The outlet opening of the pressure limiting valve is placed opposite of the cartridge holder.

BEKA HAMAX System 2 uses transparent plastic cartridges. These consist due to a adapter system of different types. Cartridge type S is to prefer. The grease level is checked optically by the position of the visible follower piston. To be able to check the grease level when the cartridges are almost empty, the pump housing is equipped with an inspection window. The function is checked with the visible eccentric shaft which rotates during operation.

Hydraulic circuit diagram



- | | |
|--------------|----------------------------|
| 1: Filter | 4: Hydraulic motor |
| 2: Diaphragm | 5: Pumping element |
| 3: Throttle | 6: Pressure limiting valve |



Assembly and operation

The pump is fixed to the accessory unit by means of two securing bolts which are prevented from being loosened by specific lock washers. Depending on the required design, minor assembly work on the pump is required prior to commissioning:

- When performing the hose connection, the enclosed screw couplings must be mounted. To be able to use one of the other outlets, the plug screw with copper sealing ring located on this outlet must be replaced by the inlet screw coupling. Subsequently the grease pump's supply and return lines must be connected to the carrier's hydraulic system with a bypass line. G 1/4" screw couplings are required for the connection of the oil and lubricant lines.
- When performing the flange connection, the G1/4" threads must be closed by the enclosed plug screws and sealing rings. The enclosed o-rings are used to seal the flange connections.

The pump's supply connector comprises a filter and a diaphragm to limit the supply flow.

The return socket may be subject to a max. back pressure of 20 bar. This value should not be exceeded, as otherwise the pump can't work optimally.

On delivery, the lubricant line is connected to the screw coupling next to the cartridge guide. To be able to use the other outlets, make sure that the plug screw which is located at the closed outlets and provided with a copper sealing ring is exchanged against the inlet screw coupling.

Lubricant circulation:

- Maximum admissible back pressure: 250 bar
- Temperature range: -20 up to +70°C
- Lubricants which can be delivered: up to NLGI grade 2
- Lubricant reservoir: cartridges

For manual greasing in case of failure of the hydraulic system, a grease nipple has been integrated.

Technical data:

Hydraulic motor:

Supply: Hydraulic hammer circuit, 90-250 bar
 Difference pressure in operation: min. 70 bar
 Admissible return pressure: max. 20 bar
 Displacement: max. 2 l/min
 Default speed of the eccentric with oil ISO VG 46 at 20° C: 14 rpm- at 1,8 l/min.
 Hydraulic oil: ISO VG 46-100
 Temperature range: -20°C up to +70°C
 Speed can be adjusted with throttle

Pumping elements:

Pressure limiting valve: 280 bar
 Delivery rate/ stroke PE120FH: 0,12 cm³
 Delivery rate regulation:

sixfold notches per 1/2 revolution
 Reduction: 0,013 cm³ per notch
 Default stroke number: 14 strokes/min.
 Stroke number can be adjusted with throttle

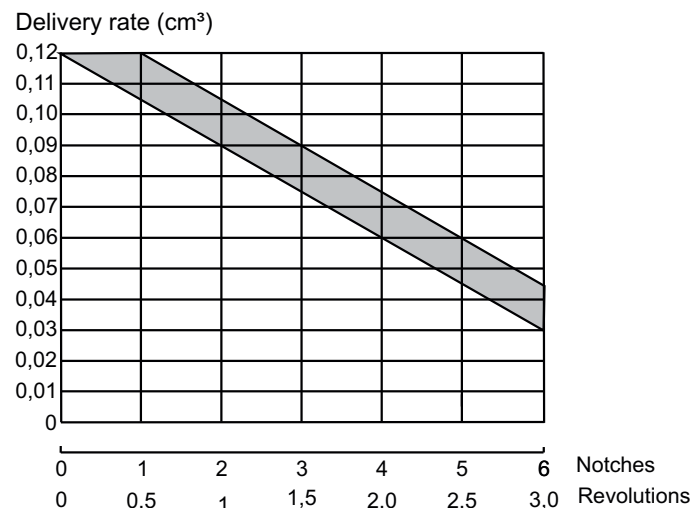
In case of minor lubricant requirements a pump element with adjustable delivery rate is optionally available.

General:

Lubricant: EP2 grease or Cu paste
 Grease supply: different types of cartridges
 Type of cartridge: dependant of cartridge sleeve
 Weight: approx. 6,7 kg
 Grease nipple for manual greasing available
 Four different lubricant outlets possible

Delivery rate diagram:

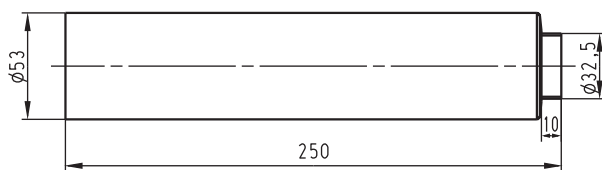
PE-120FVH



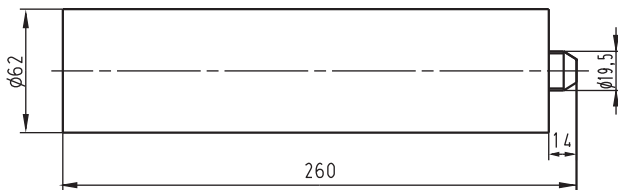
Cartridge system

The grease pump BEKA HAMAX System 2 features an adapter system which enables the use of three cartridge types.

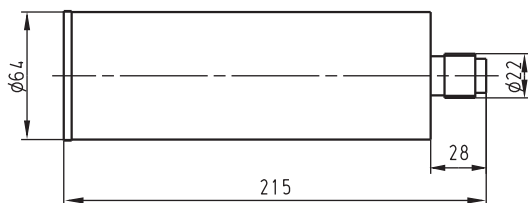
Type S - BEKA standard:



Type F:



Type L:

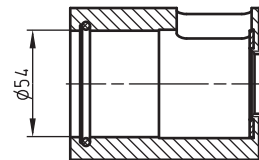


Adapter and cartridge ref-No.:

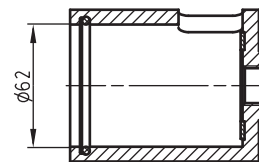
Type	Grease qty.	Fluid	Cartridge	Adapter
S	400g	EP2 - Gr.	0320092	2576GK0001
		Cu-Paste	0320091	
F	500g	EP2 - Gr.	0320089	2576GK0002
		Cu-Paste	0320090	
L	400g	--	--	2576GK0003
		--	--	

Cartridge adapter

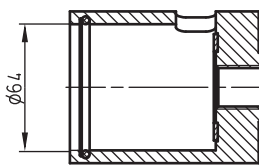
Adapter 2576GK0001 - for cartridge Type S:



Adapter 2576GK0002 - for cartridge Type F:

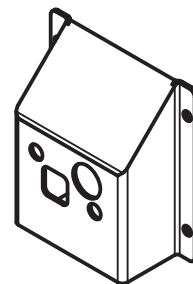


Adapter 2576GK0003 - for cartridge Type L:



Accessories

To protect the pump, you can order a protective casing. The pump can be filled as before via integrated bore-holes, and the level checked via inspection windows. Moreover, the throttle valve regulating the delivery flow is still accessible.



Pump protection incl. fasteners:

order no.
25760002

Pump protection without fasteners:

0800801461



Ordering key **BEKA H A MAX2**
SYSTEM

Construction type: _____ 2576 . 0 . 01 . 02 . 02 . 00

Pumping element	Code
PE 120 FH	0

Cartridge	Code
Type S-Cu Paste	01
Type S-EP2 Grease	11
Type F-Cu Paste	02
Type F-EP2 Grease	12
Type L	03

Hydraulic connection	Code
Internal thread G1/4", ø8 or flange connection	02

Lubricant connection	Code
Internal thread G1/4", ø8 or flange connection	02

Special variants	Code
Standard	00

© BEKA 2012 All rights reserved!

Subject to alterations!

